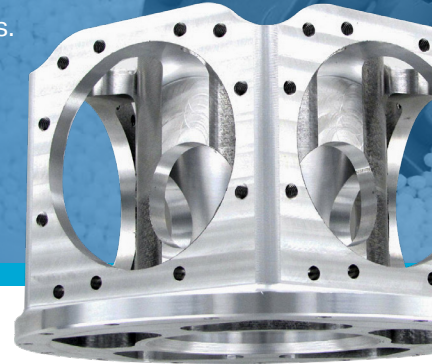




INDUSTRIAL SECTOR

Precision Additive (3D), Machining and Injection Molding Solutions

Harbec, Inc. is a ISO 13485:2016 & AS9100D certified contract manufacturer of tight tolerance precision 3D printed metals and plastics, machined components and assemblies as well as injection molded components and assemblies. We are committed to advanced technology, product development, quality management and continuous improvement.



Harbec, Inc. is a turnkey contract manufacturing service provider. Along with 3D printing metals and plastics, machined components and assemblies, injection molded components and assemblies, and corresponding quality systems, we take pride in managing material sourcing (standard metals and plastics, as well as exotic materials), new product introduction processes including prototypes and product validations, and build-to-stock inventories and logistics, all in our climate-controlled, sustainable carbon neutral manufacturing facility.

INDUSTRIES SERVED

- Aerospace
- Medical
- Defense
- Industrial

CERTIFICATIONS

- AS9100D
- ITAR
- ISO13485: 2016
- ISO 14001
- SDVOB



CAPABILITIES

Injection Molding

- All Electric Machines (up to 400T)
- ISO Class 8 (100,000) Clean Room
- Scientific Molding
- DFM & Mold Flow Analysis, SPC
- Onsite Full 24-5 Tool Shop Mold Service
- SPI-Class A-101 Molds
- End of Arm Automation & Vision System
- Pad Printing, Heat Staking, Ultrasonic Welding
- KIT Assembly

Metal Additive Manufacturing

- Direct Metal Laser Sintering (DMLS)
- 15-5, 17-4 Maraging Steel, Inconel, AlSi10mg, Ti64, Invar

Polymer 3D Printing

- Stereolithography (SLA)
- Fused Deposition Modeling(FDM)
- Selective Laser Sintering (SLS)
- PolyJet (CONNEX)
- Complete CNC Surface Finishing

CNC Machining

- CNC Vertical Machining Centers (3 to 7 Axis)
- CNC Horizontal High-Speed Machining Centers
- CNC Centers with Fire Trace (Magnesium Dedicated)
- CNC Lathes
- EDM (Sinker) EDM (Wire)
- Micro Deburring and Polishing (100X Magnification)
- Automated Surface Blasting
- Metrology Inspection/Data Collection